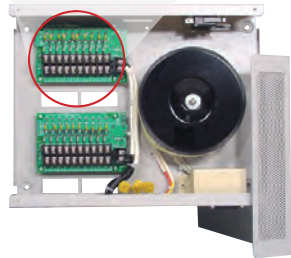
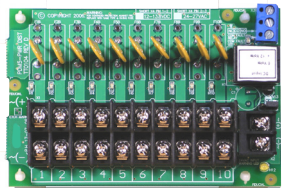


Tactical Power Products - Australia's premier security power specialists.

High quality security products designed, manufactured and supported in Australia.

[www.tacpower.com.au](http://www.tacpower.com.au)

Tel: 1300 822769 - PO Box 90 Kurrajong NSW 2758  
sales@tacpower.com.au



**TACTICAL**  
POWER PRODUCTS

10 Way Power Distribution Module

PDM 6

## General

The TACTICAL POWER PRODUCTS PDM6 Power Distribution Module offers a user friendly solution to low voltage power distribution for low voltage DC & AC equipment. (eg CCTV & Access Control Systems) The use of PDM modules minimizes the likelihood of a total system shutdown in the event of a short circuit on any one single circuit run.

Featuring state-of-the-art SMD Technology and 10 individual self -resealing polyswitch protected circuits - each with an LED to indicate circuit status, the PDM6 is available with a variety of polyswitch ratings to suit your application - please specify 250mA, 500mA or 1A fuses at time of order. (default is 10 x 1A)

Installers should assess the current draw of each connected device and ensure that the power supply is adequately rated to service the load.

### Operational Voltage Jumper Setting

PDM6 may be set for use with 12Vdc or 24Vac devices and ships from the factory set for 24Vac operation.

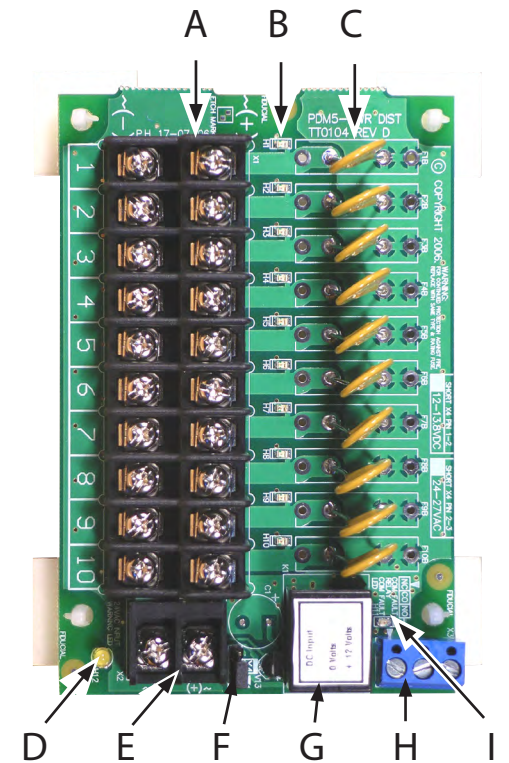
If 12Vdc operation is desired, simply change the X4 Jumper (F) from Pins 2 & 3 to Pins 1 & 2 (outer most pair).

### Common Fault Relay

PDM6 includes a common fault output relay (rated at 1A) to drive external devices, such as alarm panels, sounders and DVR alarm inputs, ensuring that failure of any individual circuit does not go unnoticed.

During normal operation all green circuit status LED's (B) will be lit. In the event of overcurrent / short circuit, the corresponding circuit status LED will extinguish, the Common Fault Relay (G) will change state and the Common Fault LED (I) will light.

When the fault is rectified (short circuit removed), the polyswitch will automatically reset, causing the appropriate LED & Common Fault Relay to return to normal.



	Description
A	Output Terminal Blocks
B	Individual Circuit OK LED's ( Green = OK )
C	Individual Circuit Fuses
D	24Vac Operation LED
E	Input Terminals ( Max total current = 10A )
F	12Vdc / 24Vac Jumper Link
G	Common Fault Relay
H	Common Fault Relay Output ( NC - Com - NO)
I	Common Fault LED

### PDM6 Specifications

Input Voltage:	12Vdc or 24Vac
Output:	10 x 1A outputs
Total Current:	10A Maximum
Relay Rating:	1A SPDT
Size:	110 x 81 x 34 mm
Weight:	120 gm



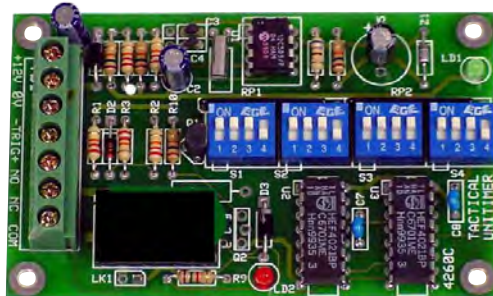
TPS24-6DC

24Vdc 6A Power Supply with Battery Charger



CYTURION GSM

2G & 3G GSM Back-Up & Data Transmission



TIM-01

Universal Digital Timer



PDM5

Power Distribution Board

[www.tacpower.com.au](http://www.tacpower.com.au) or ask Tactical Power Products for details